

Smart Wi-Fi Outdoor Plug



Tapo P410M



Energy Monitoring



Zero-crossing



Anti-overcharging



Matter Certified



Voice Control



Remote Control



Schedule & Timer



IP54 Weatherproof



Works with
Apple Home



works with
Google Home



Works with
SmartThings

// Highlights

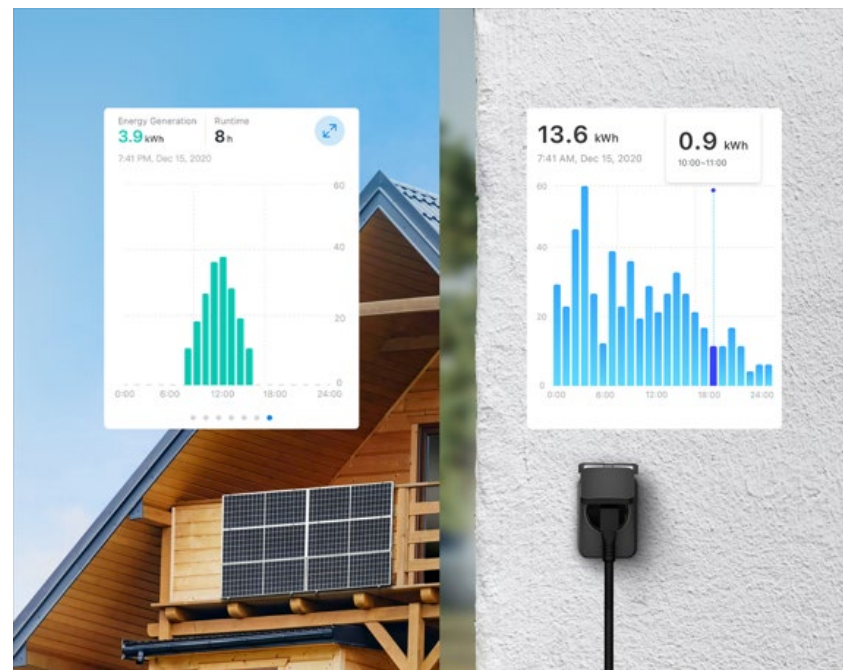
IP54 Splashproof

With IP54 weather resistance and a wide operating range of -20°C to 50°C, Tapo P410M stays durable and dependable in rain, snow, and heat.



Energy Generation & Tracking

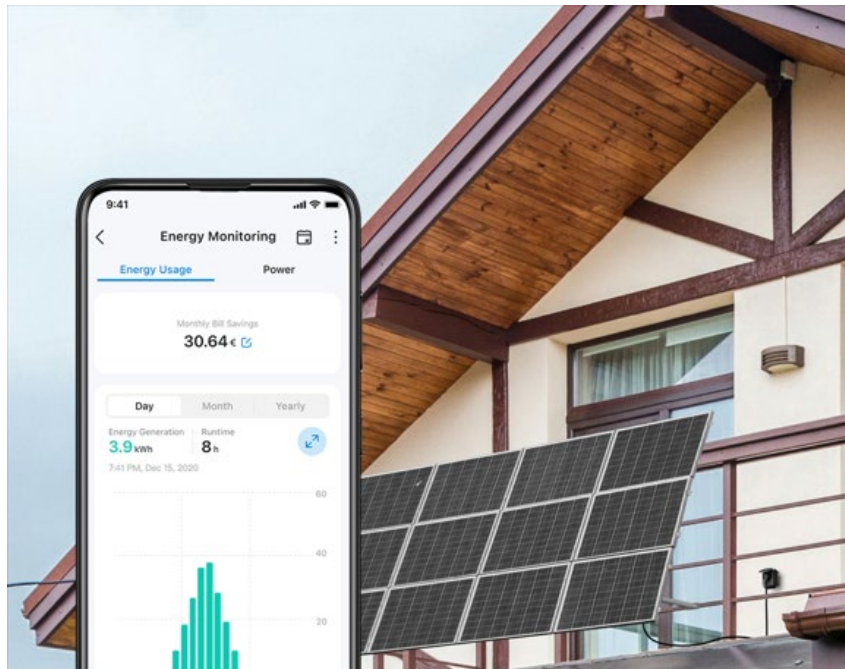
The advanced hardware of P410M automatically detects the direction of current, making it suitable for both balcony power stations and household appliances, providing comprehensive energy monitoring.



// Highlights

Solar Savings, Clearly Predicted

Maximize your solar investment with Tapo P410M. It calculates your solar power generation benefits and helps you determine when you'll recoup the cost of your solar equipment.



Anti-Overcharging

When devices are fully charged, the outlet will automatically switch off, preventing overcharging and extending the device's battery life.



// Features

- **Power Protection** – Your connected device will automatically shut off when the power exceeds the set threshold, protecting your household's safety.
- **Zero-Crossing Detection** - Addresses relay contact welding, increasing the lifespan of relays by more than 10 times compared to other plugs.
- **Remote Control** – Instantly turn connected devices on/off from wherever you are through the Tapo app.
- **Schedule & Timer** - Set schedules to automatically turn on/off your smart plugs according to your daily routine and preferences.
- **Matter Certified** – Integrate Matter-certified Tapo devices with other Matter end products into your preferred ecosystem.
- **Voice Control** - Manage your smart plug with voice commands via Amazon Alexa, Apple Siri, or Google Assistant.
- **Smart Actions** - Set your plug to automatically turn on or off based on custom triggers, allowing your devices to seamlessly adapt to your lifestyle—all through the Tapo App.
- **Away Mode** - Automatically turns devices on and off at different times to give the appearance that someone is home.

// Specifications

General

- LED&Button: Status LED, Power Button
- Wireless: IEEE 802.11b/g/n, 2.4 GHz Wi-Fi
- Setup: Bluetooth
- Voltage: 200-250 V~, 50/60 Hz
- Max Load: 3,680 W, 16 A
- Weatherproof Rating: IP54[†]

Others

- Package Contents:
Tapo P410M
Quick Start Guide
- Certifications: CE, EAC, RoHS
- Working Temperature: -20 °C– 50 °C
- Operating Humidity: 10%–90% RH, Non-condensing
- Dimensions: 93.3 × 83 × 48.24 mm (Without plug)
93.3 × 83 × 93.34 mm (With plug)



[†]Voice control is only supported with certain voice assistants.

*Made with V-0(UL94) flame-retardant material.

[†]Please use IP54 sockets and splashproof plugs for better water proofing.

For more information, please visit <https://www.tapo.com/>

Specifications are subject to change without notice. All brands and product names are trademarks or registered trademarks of their respective holders.

©2025 TP-Link